









PSU

board of directors

-  **president**
martin cepeda
-  **vice president**
julie diehl
-  **secretary**
bob krandel
-  **treasurer**
john baranauskas
-  **membership**
robert wolf
-  **community**
jenn borkosky
-  **social**
amy lettich
-  **public relations**
gina melfi

to email a board member:
title@psumontco.com
(no spaces)

montgomery county alumni association

chapter news 

published as a benefit to members of the Penn State Montgomery County Alumni Chapter

SUMMER MEMBERSHIP DRIVE!

We Are #2, we are #2, we are #2... Penn State is the #1 dues paying alumni society in the world and now we can say that Montgomery County has the 2nd largest concentration of Penn State Alumni in the country. After many years as the #3 county, we moved up as the county exceeded 21,000 alumni.

But why stop there; let's get the county to the level of the #1 dues-paying alumni membership. To achieve that goal we have a lot of work ahead of us, starting out with realistic goals. Most of you are dues paying members of the MontCo Chapter, but many of you may not be a paying member of the overall Alumni Association. Our goal is to help both groups grow.

Opportunity 1 - Get your fellow Penn State Alumni that live or work in Montgomery County to become a new member of the MontCo Chapter. We are looking to reward the current member that gets the most new members between now and August 31, 2010.

Have your friends join through www.psumontco.com/memsub.html and have them put your name in the 'Special Instructions' field.

1st Prize: \$50 AMEX Gift Card

2nd Prize: \$25 AMEX Gift Card

Opportunity 2 – Become a Life member of the Penn State Alumni Association. If you become a life member you will get your next MontCo Chapter renewal for free. There are two methods to become a life member:

Go to <https://www.lionlink.psu.edu/member.nsf/4Life>. Choose the 'Alumni Chapter' box and select "Montgomery County Chapter ALP" from the list box of chapters.

If you want to pay by check or use the installment plan, use the printable application at <http://www.alumni.psu.edu/benefits/join/realLifeApplication.pdf>. At the bottom right of the form make sure to fill in the Three-digit RealLife Group Code "ALP".

If you are interested in becoming a part of the membership committee, have the passion for Penn State and ideas for growing membership and the time to help implement these ideas, please contact membership@psumontco.com.

[visit us online]
www.psumontco.com

CONNECT TO THE MONTCO CHAPTER ONLINE

Our Chapter is developing new ways to stay in touch with members and friends online. If you haven't already, join our Facebook group (<http://www.facebook.com/?ref=logo#!/group.php?gid=>

[38446834267&ref=ts](https://www.youtube.com/user/psumontco)) to stay informed and up-to-date on Chapter news, and subscribe to our YouTube channel (www.youtube.com/user/psumontco) to view event videos!



Penn State Friends,

As the temperature warms up, our Chapter's Board of Directors has put together a premier schedule filled with events to get you, your friends, and your family members outdoors. Our Chapter's event schedule can be found at <http://www.psumontco.com/events.html>. I encourage you to sign up for a few of our traditional yearly events (i.e. City Lights, Phillies games) or come out and join us at one of our new event offerings such as PSU BINGO, Camden Riversharks baseball, and our upcoming Beer Tasting events.

As our chapter demographics are very diverse, we strive to offer events that cater to different expectations for our local alumni. If you have suggestions for an event that you would like to have us consider offering, please feel free to email me at president@psumontco.com.

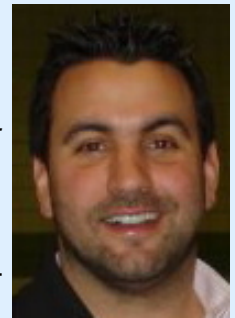
In this newsletter, you'll find the Scholarship Endowment challenge that our Chapter leadership has accepted. In my five years in this Chapter, this fundraising challenge is what I believe to be our most ambitious goal to date. I am confident that we will be able to raise the \$18,000 by 2014. As of today, we have already raised \$4,000 towards our scholarship fundraising goal. If you would like to join our scholarship committee and help achieve this fundraising goal, please email Julie at scholarship@psumontco.com. Hope to see you all at an event soon!

"We Are... Penn State"

Martin R. Cepeda, Jr., '05
President, Montgomery County Chapter
Penn State Alumni Association

MEMBER SPOTLIGHT: BRIAN PIERI

Brian Pieri ('00, Marketing) had dreamed of opening his own restaurant since seeing Rick's American Café in *Casablanca*. That dream became a reality on October 7, 2009, when Pieri opened The StoneRose Restaurant in Conshohocken (822 Fayette Street) with friend and business partner Jim Maglio. The restaurant has quickly become a popular neighborhood spot, boasting an original and eclectic menu as well as a diverse selection of beer and wine.



Before deciding to open the StoneRose, Pieri had a successful career as a financial advisor in Conshohocken, when he decided to follow his instinct and invest in his business while the economy was at a low. He quickly learned that restaurant ownership comes with a lot of hard work and long hours. "You are never really 'off' from work; there is always something that needs to get done," says Pieri. The stress and time commitment are off-set by the rewards of being self-employed. "You get to control your own destiny, and take pride in knowing that you did it the way you wanted," notes Pieri, "It keeps you engaged, and every day is different. There is no 'routine'." What does the future hold for this ambitious Penn State Montgomery County alum? "I'd like to open a second restaurant, with a different theme but still a neighborhood place, in a good neighborhood."

Check out The StoneRose's menu at www.thestoneroserestaurant.com.

FROM THE EDITOR

If you are an alumni with a story to tell or know another alum that you feel should be included in our Member Spotlight, please contact newsletter@psumontco.com.

As you can see, we have a lot going on in the MontCo Chapter! Please continue to check the chapter website, as well as Facebook and YouTube, to stay informed and communicate with the Chapter board. We have an exciting summer of diverse event offerings coming up, and we hope to see you there.



[visit us online]

WWW.
PSUMONTCO
.com

ARE YOU READY FOR A CHALLENGE? FOR THE FUTURE: THE CAMPAIGN FOR PENN STATE STUDENTS

As part of *For the Future: The Campaign for Penn State Students*, the University has challenged the local PSU MontCo Chapter to participate in the most ambitious fundraising campaign in our Chapter's history. At its heart, this is a campaign for Penn State students—to enable the next generation and all succeeding generations of graduates to realize their full potential as individuals—to sustain their families, advance their professions, and contribute to our country's strength.

Ensuring student access and opportunity through scholarship support is one of the key campaign objectives. Beginning today, the PSU MontCo Chapter has launched a 4-year fundraising campaign to grow our scholarship endowment by \$18,000. We have committed to raising the \$18,000 by June 30, 2014.

The PSU MontCo Chapter, through the support of local alumni and friends, has an endowed scholarship fund with Penn State University. Your donations help our fund grow and allow us to provide larger scholarship awards to deserv-

ing Penn State students in Montgomery County.

Why have we accepted this challenge? The need for scholarship has never been greater. Last academic year, the unmet financial aid need for Penn State undergraduates was more than \$100 million. Our aim is to help achieve the University's goal to ensure that future Montgomery County students can afford Penn State without incurring massive debt following their graduation.

Please check our website www.psumontco.com regularly for further details on how you can donate or volunteer your time. If you have fundraising experience or have ideas/suggestions and would like to participate in our Scholarship Committee, please email scholarship@psumontco.com.

For the Glory!

Julie Diehl
Vice-President & Scholarship Chair
Montgomery County Chapter
Penn State Alumni Association



SENDING OFF THE FRESHMEN IN STYLE



As spring rolls around, high school seniors are graduating and preparing to start their college experience. Before they head off to Penn State, the MontCo Chapter will hold its annual Freshmen Send-Off picnic on Sunday August 8th at Mondauk Commons in Fort Washington.

Last year's morning rain did not stop over 60 future Penn Staters, parents and alumni from gathering to celebrate the upcoming fall semester. Alumni shared memories and gave advice to help the incoming freshmen with their college career.

If you would like help with this year's picnic or are interested in speaking at the event, please contact Jenn (community@psumontco.com).

penn state
alumni association

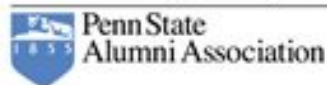
montgomery county chapter
p.o. box 1031
blue bell, pa 19422

[visit us online]

www.

PSUMONTCO
.com

Montgomery County Chapter



ON YOUR CALENDAR

June 2010

6/17—Penn State Night with the Camden Riversharks.

6/23—B.I.N.G.O., Masonic Village at Lafayette Hill.

6/25—Penn State City Lights 2010, Phila Museum of Art.

6/25—KEA Boxing at the Arena.

July 2010

7/8—Monthly Happy Hour, PJ Whelihan's Blue Bell.

7/9—Penn State Night at Phillies Game.

7/31—Alumni Beach Happy Hour, Dewey Beach.

August 2010

8/5—Monthly Happy Hour, PJ Whelihan's.

8/8—Freshmen Sendoff Picnic. Save the date!

September 2010

9/2—Monthly Happy Hour, PJ Whelihan's.

9/4—Penn State THON Night at Phillies Game.

9/11—TV Tailgate, PJ Whelihan's.

October 2010

10/2—TV Tailgate, PJ Whelihan's.

10/7—Monthly Happy Hour, PJ Whelihan's.

10/23—TV Tailgate, PJ Whelihan's.

10/30—TV Tailgate, PJ Whelihan's.

November 2010

11/4—Monthly Happy Hour, PJ Whelihan's.

11/13—TV Tailgate, PJ Whelihan's.

11/20—TV Tailgate, PJ Whelihan's.

December 2010

12/2—Annual Holiday Party, PJ Whelihan's.

Details for all events can be found at www.psumontco.com/events.html