

MONTGOMERY COUNTY ALUMNI ASSOCIATION Chapter NEWS

"Published as a benefit to members of the Penn State Montgomery County Alumni Chapter."

PENN STATE Montgomery County Alumni Chapter P.O. Box 1031 Blue Bell, PA 19422

MANNA AND SECOND MILE: SERVING THE COMMUNITY

Manna on Main Street was founded in 1981 and has grown to be a place where those seeking help and those willing to help have gathered to work together. The mission of Manna on Main Street is to provide assistance to members of the community in obtaining the goods and services needed for daily living and basic human dignity.

Manna is a small soup kitchen located in Lansdale that has become a meaningful experience for both the Penn State Alumni and the guests invited to dinner. At the event, members of the Penn State Montco chapter prepare a meal for



people in need. After the meal is prepared, the Penn Staters and guests sit down to enjoy the food and have a pleasant time dining together. Due to the success of the past few trips to Manna, the chapter will be preparing another meal on the 18th of April. Come join your fellow Alumni at this event; this small commitment of a few hours yields huge rewards for yourself and the community.

Space is limited, so sign up at psumontco.com early. If you have a recipe idea or menu suggestion please email Jenn at community@psumontco.com.

(Continued on page 2)

HELP OUR MEMBERSHIP GROW

We have always stressed the growth of our membership as crucial to the continued success of our Chapter. We can't do it alone; we rely on our active members and friends to reach out to other local Alumni to get involved. From social events, such as bowling, happy hour, TV tailgates, and Phillies games, to service events, including Manna on Main Street, Toys for Tots, Freshman Sendoff Picnic, and



more— there truly is something for everyone to enjoy and be involved with. Our goal for 2010 is to substantially increase the number of active members living in, working in, or friends of Montgomery County. If each member brings one new friend into the Chapter, think of how much more we could do for Penn State and our Alumni! Email membership@psumontco.com with suggestions or questions.



Board of Directors

- > President
Martin R. Cepeda, Jr.
- > Vice President
Julie Diehl
- > Secretary
Bob Krandel
- > Treasurer
John Baranauskas
- > Membership
Robert Wolf
- > Community
Jenn Borkosky
- > Social
Amy Lettich
- > Public Relations
Gina Melfi
- > To e-mail anyone on the board, use their title with no spaces
@psumontco.com

Inside this issue:

Community Service	2
Presidents Message	2
Holiday Party 2009	3
New Board Member	3
Events Calendar	4

www.psumontco.com



<http://www.facebook.com/group.php?gid=38446834267>

(Continued from page 1)

The Second Mile is a state-wide nonprofit organization helping the youth of Pennsylvania achieve their potential as individuals. The Second Mile organizes activities and programs for children to promote self-confidence as well as physical, academic, and personal success.

On Sunday March 28, The Penn State Montgomery County Alumni will be helping The Second Mile with a recreational and educational program for elementary students ages 5-12. Most of the children involved are referred to the program by their school counselors or teachers because they could benefit from positive activities and addi-

tional support. They may come from changed families or difficult environments. Others may be struggling socially or academically and can use a positive influence in their lives who stresses the value of education and models positive social interaction.

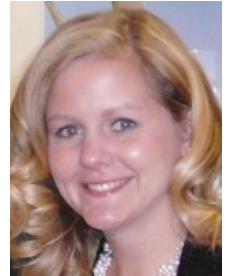


Providing Children with Help and Hope

The Penn State Alumni volunteers from our chapter will help the or-

ganization with registration, activities, handing out snacks and helping with clean-up at the end of the event. If you are interested in volunteering your time for this special community event, please register at www.psumontco.com. Volunteers for this event are limited to 10 people, so register early to secure a spot.

If you have any questions about this event, feel free to contact Jenn at community@psumontco.com



MESSAGE FROM THE PRESIDENT

Penn State Friends,

Our Chapter's active network continues to grow under the leadership of our board members as we now regularly communicate with almost 900 Penn State Alumni and friends living and working in Montgomery County. While the growth in our member outreach has increased substantially since 2006, there are still many more Penn Staters that we are working to add to our Chapter's network, with over 19,000 alumni currently living in Montgomery County.

If you know any Penn State Alumni living in Montgomery County, I encourage you to invite them to an event so that they can experience what our Chapter and network has to offer them in their daily lives. As

I have regularly highlighted, the true power of our Chapter lies in the continued participation of our Chapter members.

I hope you all have stayed warm, dry, and healthy in the recent months given the winter weather conditions. Our Chapter's board has begun to put together an exceptional calendar of events based on your feedback over the last year. For up to the minute event details, please visit <http://www.psumontco.com/events.html>.

Due to our local alumni's increased interest in our event offerings, I encourage you to sign up for events early to avoid an event selling out.

I thank you for your continued interest in our Chapter and encour-

age you to contact me directly if there is anyway that my board members and I can serve you better as your local Penn State Alumni Chapter. I look forward to sharing another fun and productive year with you, filled with good times and great memories.

"We Are... Penn State"



Martin R. Cepeda, Jr. '05
President, Montgomery County Chapter
Penn State Alumni Association

DECK THE HALLS: 2009 HOLIDAY PARTY

A holiday tradition shared with old friends and new

On Thursday December 3, 2009, the Montgomery County Chapter of the Penn State Alumni Association celebrated our annual holiday party. The event was held in a private room at P.J. Whelihan's in Blue Bell, decked out with special holiday decorations. There were plenty of both old and new faces at the event, with Alumni from a wide span of graduating classes in attendance.



tion while enjoying appetizers and a full dinner buffet.

As part of the Chapter's ongoing support and involvement with community service organizations, guests of the party brought donated toys to contribute to the Marines' annual Toys for Tots collection drive. A member of the Marine Corps was in attendance to collect the donated toys and offer a few words about the history and importance of this annual charity.

Chapter Alumni and friends who contributed to the Toys for Tots collection received raffle tickets to place on donated prizes. Ruffled items included Penn State merchandise, gift certificates to local restaurants, and other special gifts.

The 2009 holiday party was a great success, enjoyed by all Alumni and



friends who attended, and was made special by the outpouring of Alumni donations to provide local families with gifts and toys to make their holidays memorable.



Alumni, friends, and guests shared memories, laughs, and conversa-

SPOTLIGHT: PUBLIC RELATIONS CHAIR

In January, the Montgomery County Chapter of the Penn State Alumni appointed Gina Melfi ('06 Film/Video) to the Public Relations chair position. Gina has been an active member of the Chapter since early 2009, attending several social and community service events.

After graduating from Penn State with a BA in Film/Video and a minor in Spanish, Gina moved to Los Angeles, CA, where she worked on several independent films and a television show. She later relocated back to Pennsylvania, working as a Project Manager at a commercial sign company for the next three years. Currently, Gina is in graduate school, working to obtain

a PA teaching certification for Spanish. She plans to spend two months in Spain this summer as part of her studies.



As Public Relations Chair, Gina's role on the Chapter board involves the creation and distribution of the quarterly newsletter, documenting and photographing all Chapter events, and being the "voice" of our Chapter to communicate with our membership and Alumni in Montgomery County. Gina can be contacted with questions at publicrelations@psumontco.com

EDITOR'S MESSAGE

As we begin the 2010 year, we look forward to introducing new features and stories to communicate with our members and fellow Alumni of Montgomery County. We have an exciting year of events ahead, and will continue to keep our members and friends informed with up-to-date highlights of Chapter news and happenings.

As part of our plan to include a Member Spotlight feature in our newsletter, we would like to hear from you if you are an alumnus with a story to tell, or know another alumnus that we should write about, please contact me at newsletter@psumontco.com

**Penn State Alumni
Association
Montgomery County
Chapter**

**P.O. Box 1031
Blue Bell, PA 19422**

president@psumontco.com

**Are you connected?
www.psumontco.com**



Montgomery County Chapter

**Penn State
Alumni Association**

On Your Calendar

March 2010

2nd Wine Tasting at The StoneRose Restaurant, Conshohocken, PA, 6:30 p.m. Tastings of "modern reds" and accompanying appetizers.

4th Monthly Happy Hour at PJ Whelihan's, Blue Bell, PA, 6:00 to 8:00 p.m. Drink specials and complimentary appetizers.

<http://www.pjspub.com/bluebell/index.htm>

28th The Second Mile community service event, Villanova University, 2:00 - 4:30 p.m.

April 2010

1st Monthly Happy Hour at PJ Whelihan's, Blue Bell, PA, 6:00 to 8:00 p.m.

17th Bowling Event at Facenda-Whitaker Lanes, Norristown, PA, 4:00 p.m. Free to members. Refreshments and appetizers included.

18th Manna on Main Street community service event, Lansdale, PA, 11:30 a.m. Help prepare a meal for members of our community.

May 2010

6th Monthly Happy Hour at PJ Whelihan's, Blue Bell, PA, 6:00 to 8:00 p.m.

June 2010

3rd Monthly Happy Hour at PJ Whelihan's, Blue Bell, PA, 6:00 to 8:00 p.m.

August 2010

8th Annual Freshman Sendoff / Alumni Picnic
Save the Date!

December 2010

2nd Annual Holiday Party
Save the Date!